

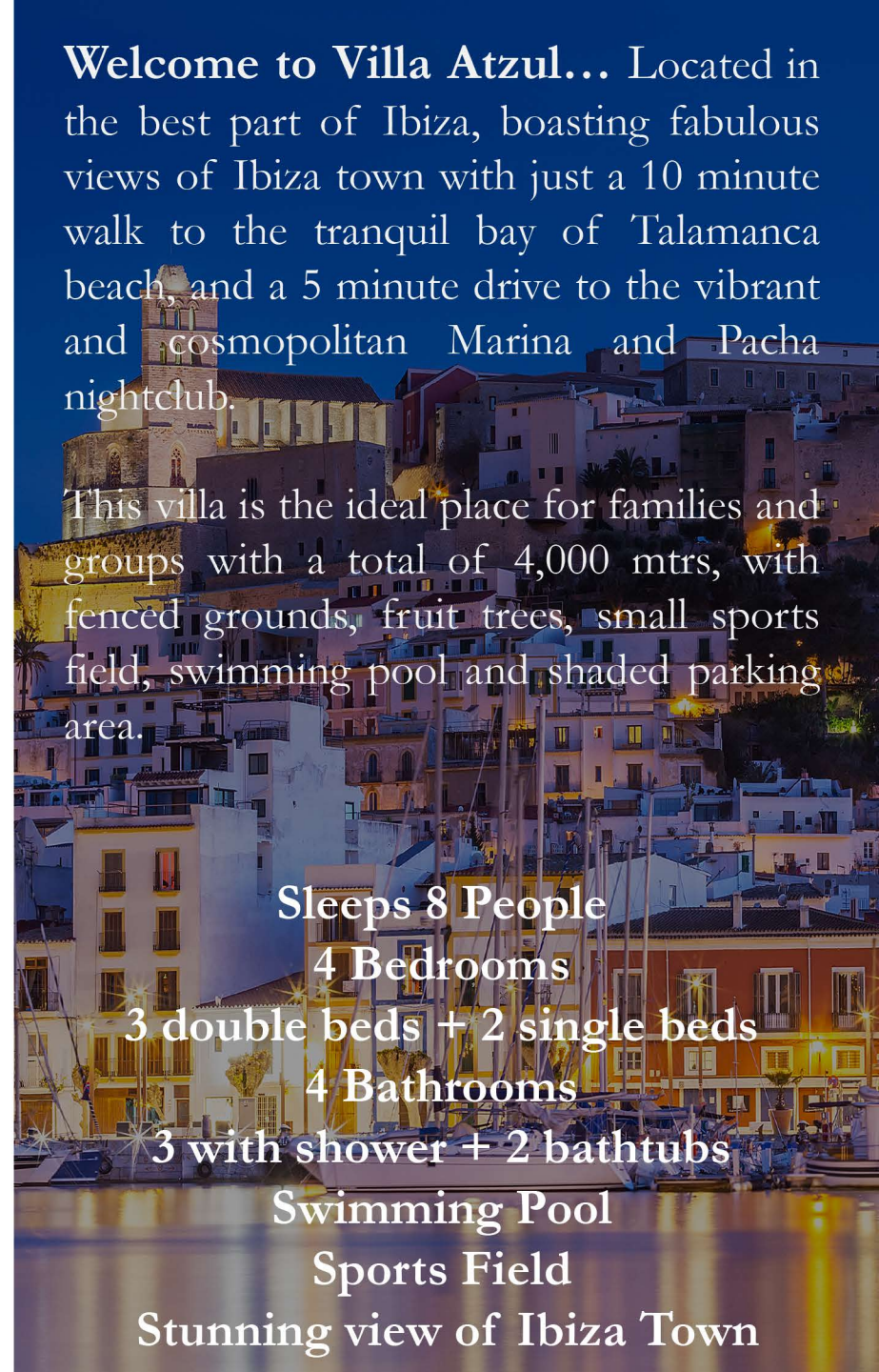




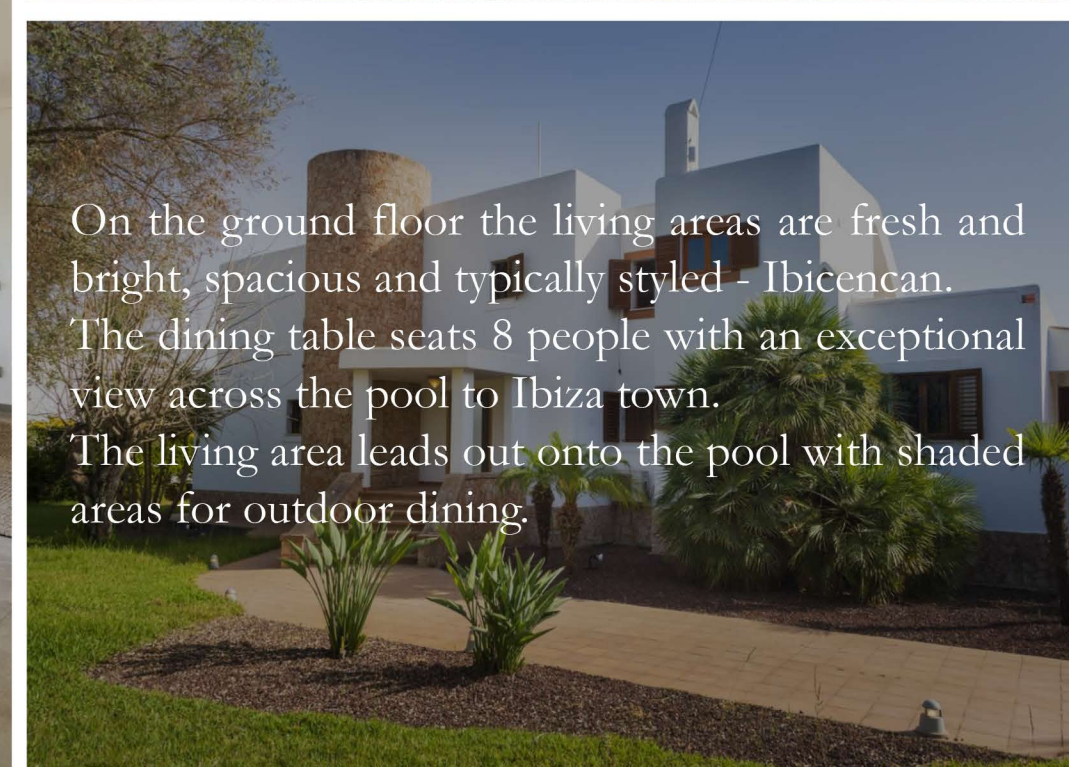
Welcome to Villa Atzul... Located in the best part of Ibiza, boasting fabulous views of Ibiza town with just a 10 minute walk to the tranquil bay of Talamanca beach, and a 5 minute drive to the vibrant and cosmopolitan Marina and Pacha nightclub.

This villa is the ideal place for families and groups with a total of 4,000 mtrs, with fenced grounds, fruit trees, small sports field, swimming pool and shaded parking area.

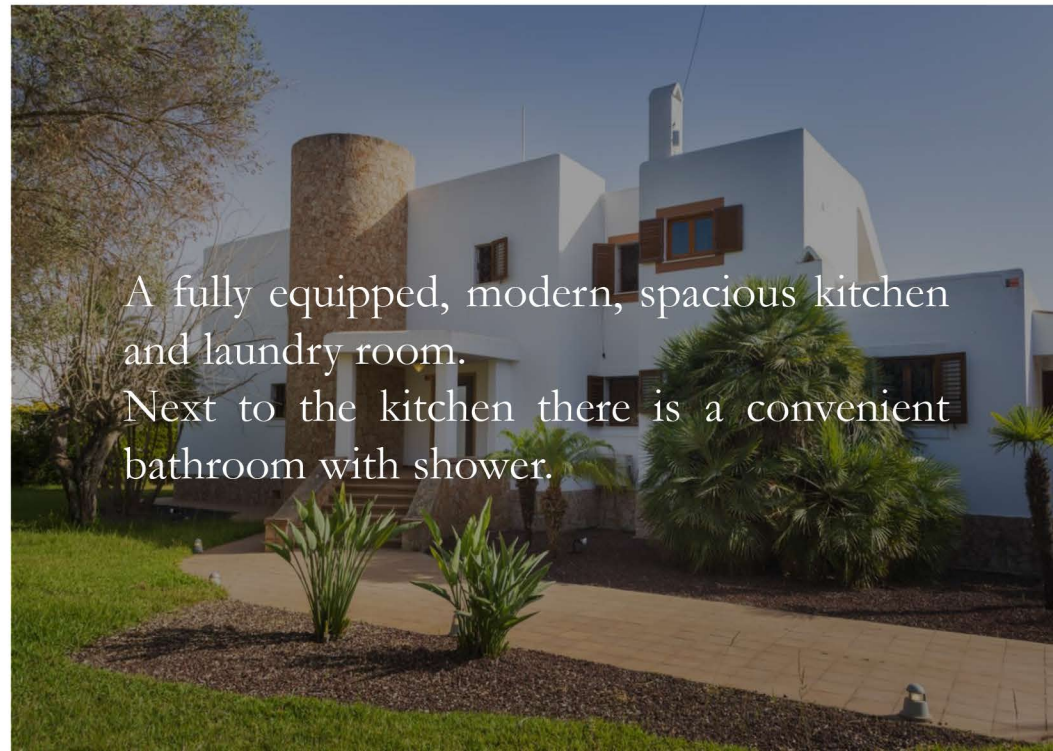
- Sleeps 8 People**
- 4 Bedrooms**
- 3 double beds + 2 single beds**
- 4 Bathrooms**
- 3 with shower + 2 bathtubs**
- Swimming Pool**
- Sports Field**
- Stunning view of Ibiza Town**







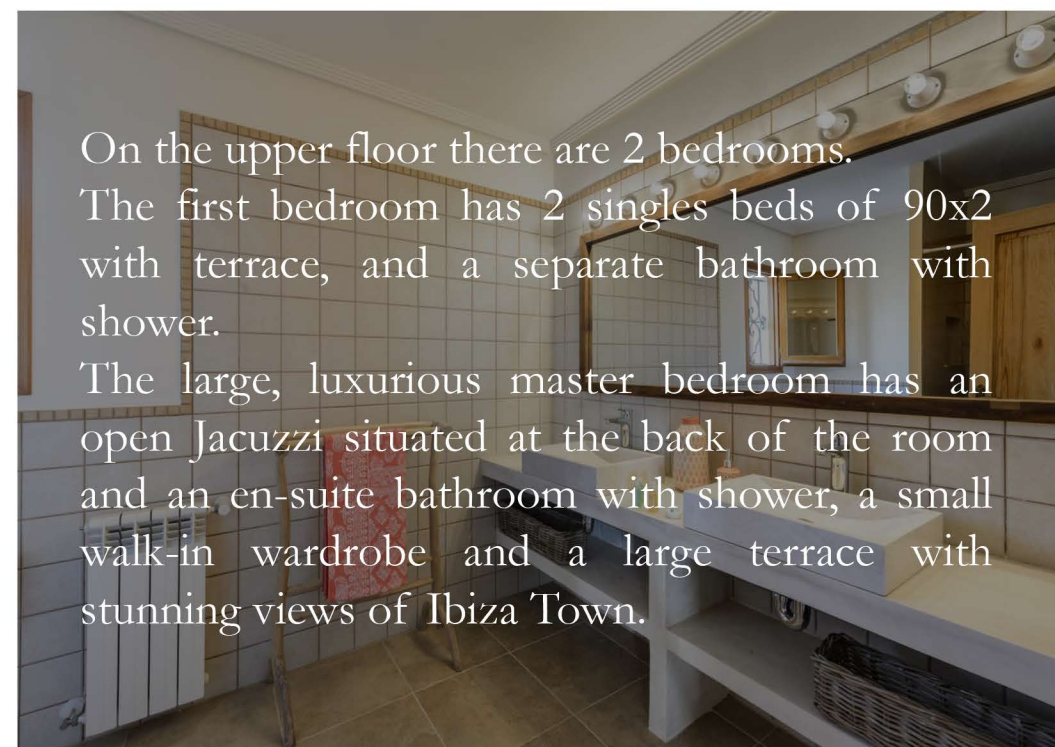
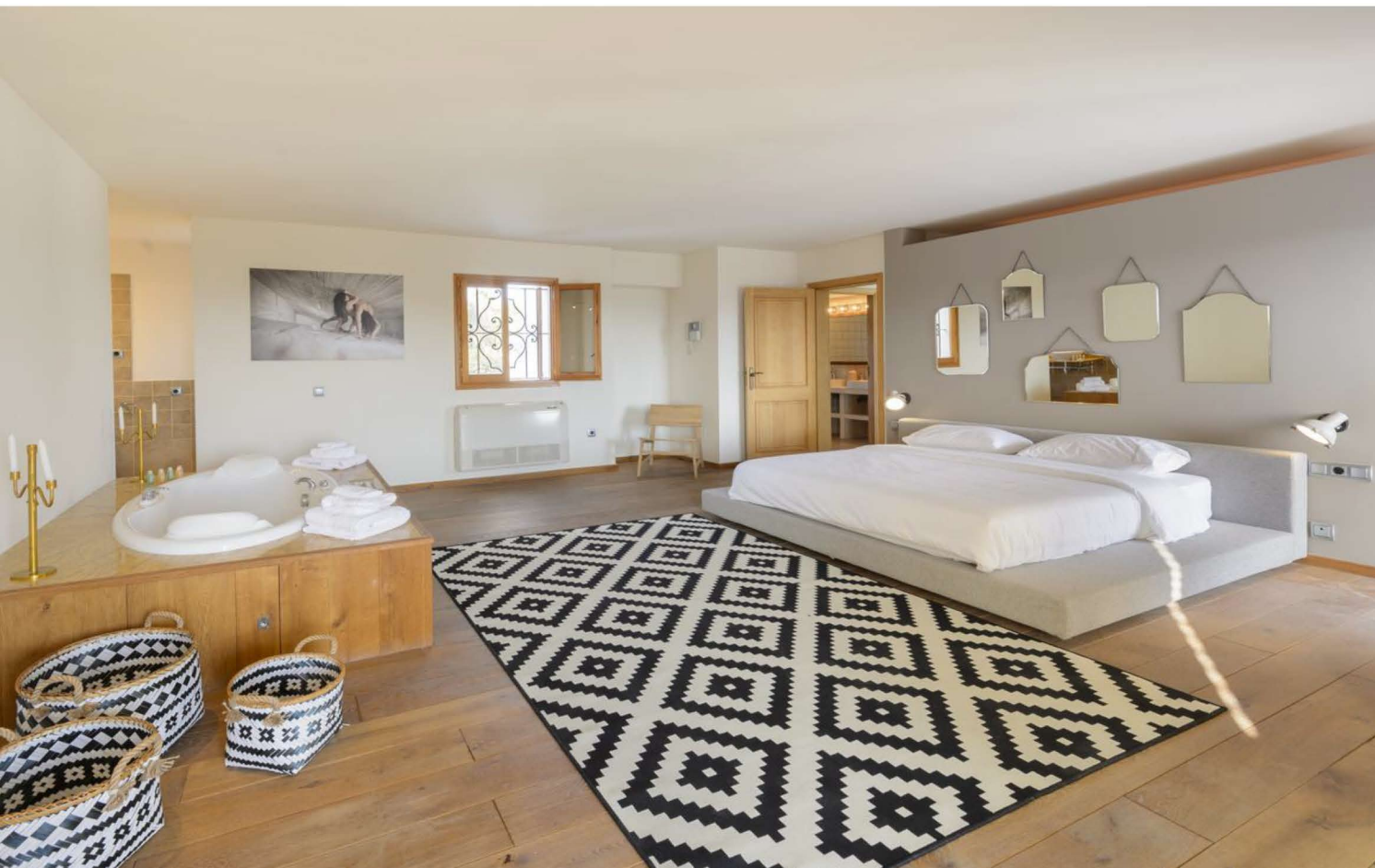
On the ground floor the living areas are fresh and bright, spacious and typically styled - Ibizcan. The dining table seats 8 people with an exceptional view across the pool to Ibiza town. The living area leads out onto the pool with shaded areas for outdoor dining.



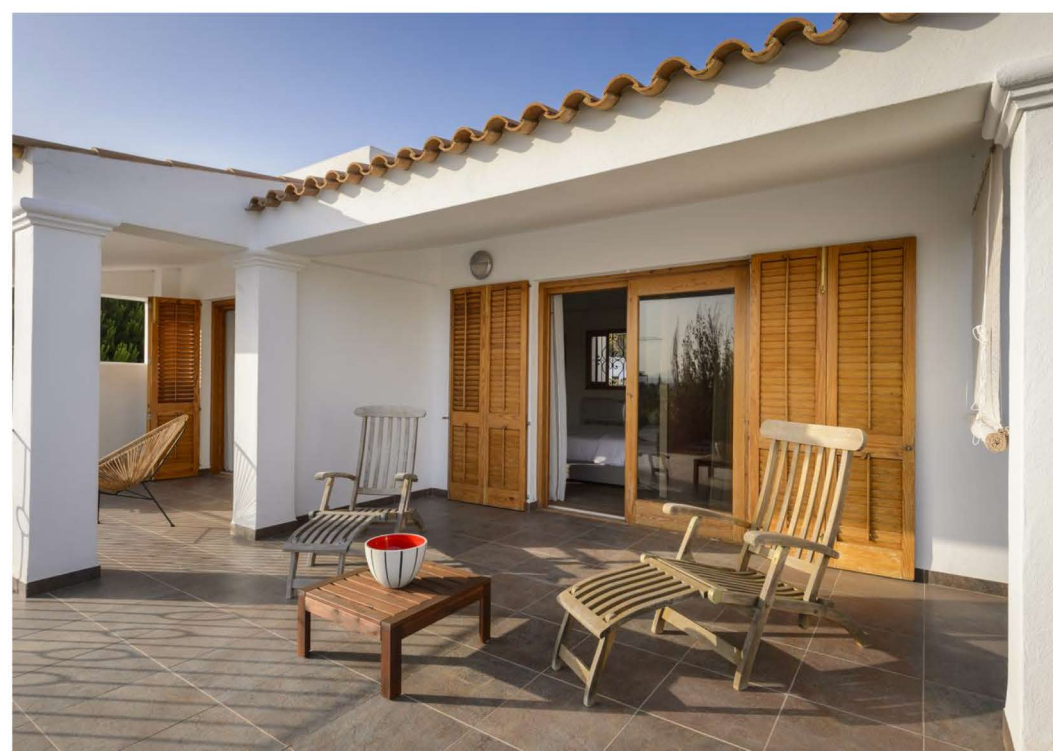
A fully equipped, modern, spacious kitchen and laundry room.
Next to the kitchen there is a convenient bathroom with shower.

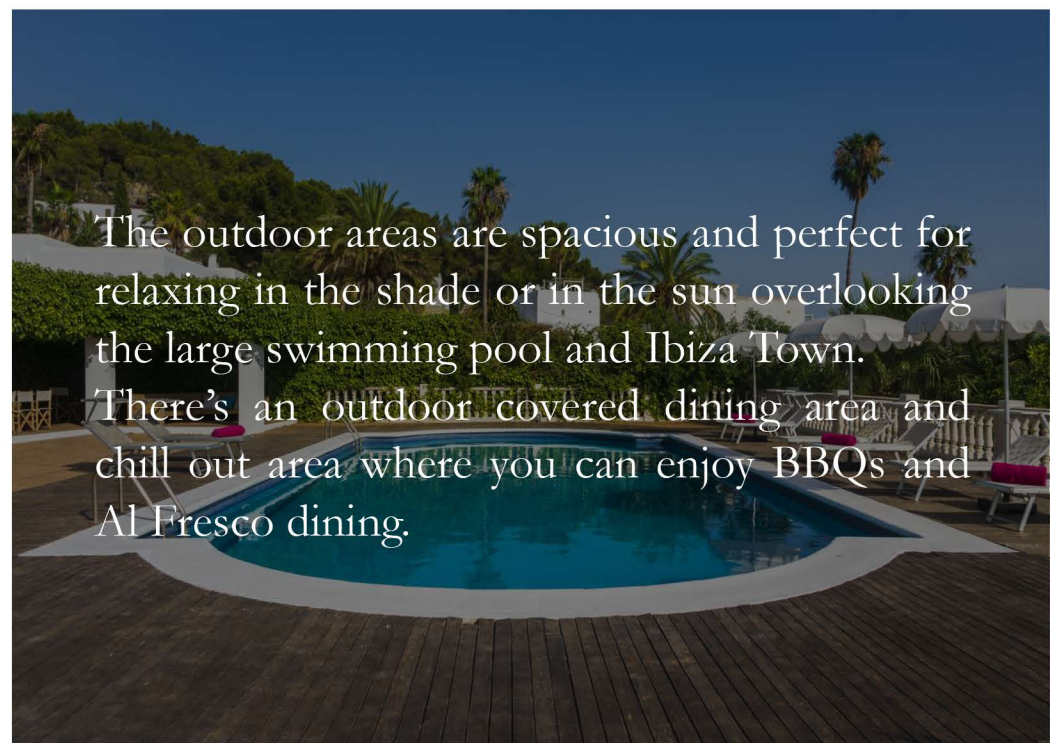
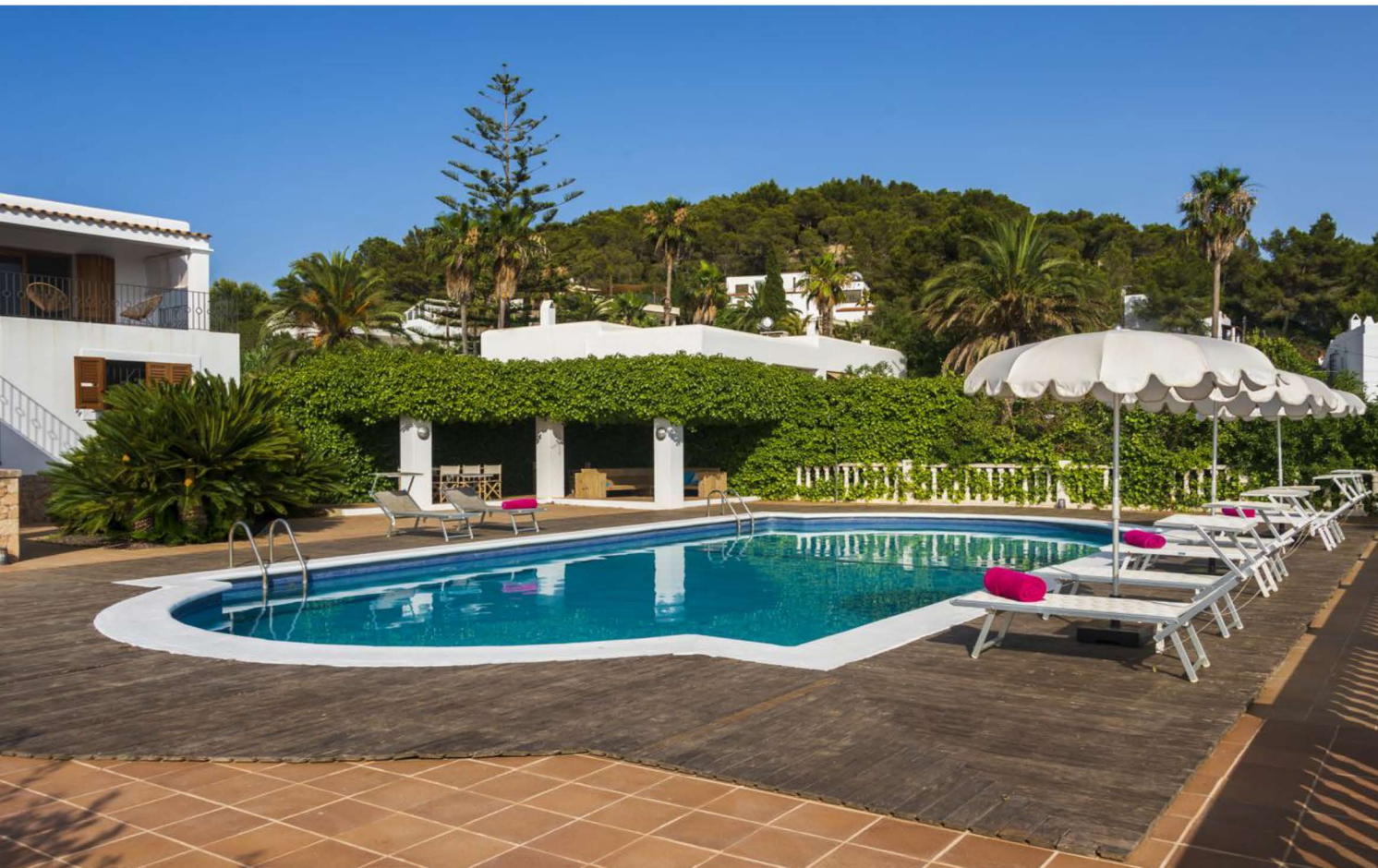


Remaining on the ground floor on the other side of the lounge there are 2 double bedrooms, sharing bathroom with bathtub.



On the upper floor there are 2 bedrooms. The first bedroom has 2 singles beds of 90x2 with terrace, and a separate bathroom with shower. The large, luxurious master bedroom has an open Jacuzzi situated at the back of the room and an en-suite bathroom with shower, a small walk-in wardrobe and a large terrace with stunning views of Ibiza Town.





The outdoor areas are spacious and perfect for relaxing in the shade or in the sun overlooking the large swimming pool and Ibiza Town. There's an outdoor covered dining area and chill out area where you can enjoy BBQs and Al Fresco dining.



Sleeps 8 People
 4 Bedrooms
 3 double beds + 2 single beds
 4 Bathrooms
 3 with shower + 2 bathtub



- Alarm System and Fibre-optic wi-fi
- Air conditioning
- Private Pool
- Rollaway/ extra beds are not available
- Pets not allowed
- Cribs (infant beds) are available for 150 Euros per stay



House Keeping	Complete every 7 days, including change of sheets and towels
Free Extras	Wifi and pool towels
Extras with charges	Please enquire for our Ibiza Service Menu
Minimum Stay	7 nights – Check in on Saturdays
Check in	From 3pm
Check out	10:00am
Distance from the villa	2 miles Ibiza, 1 mile Pacha and Marina 500 yards from Nobu Hotel